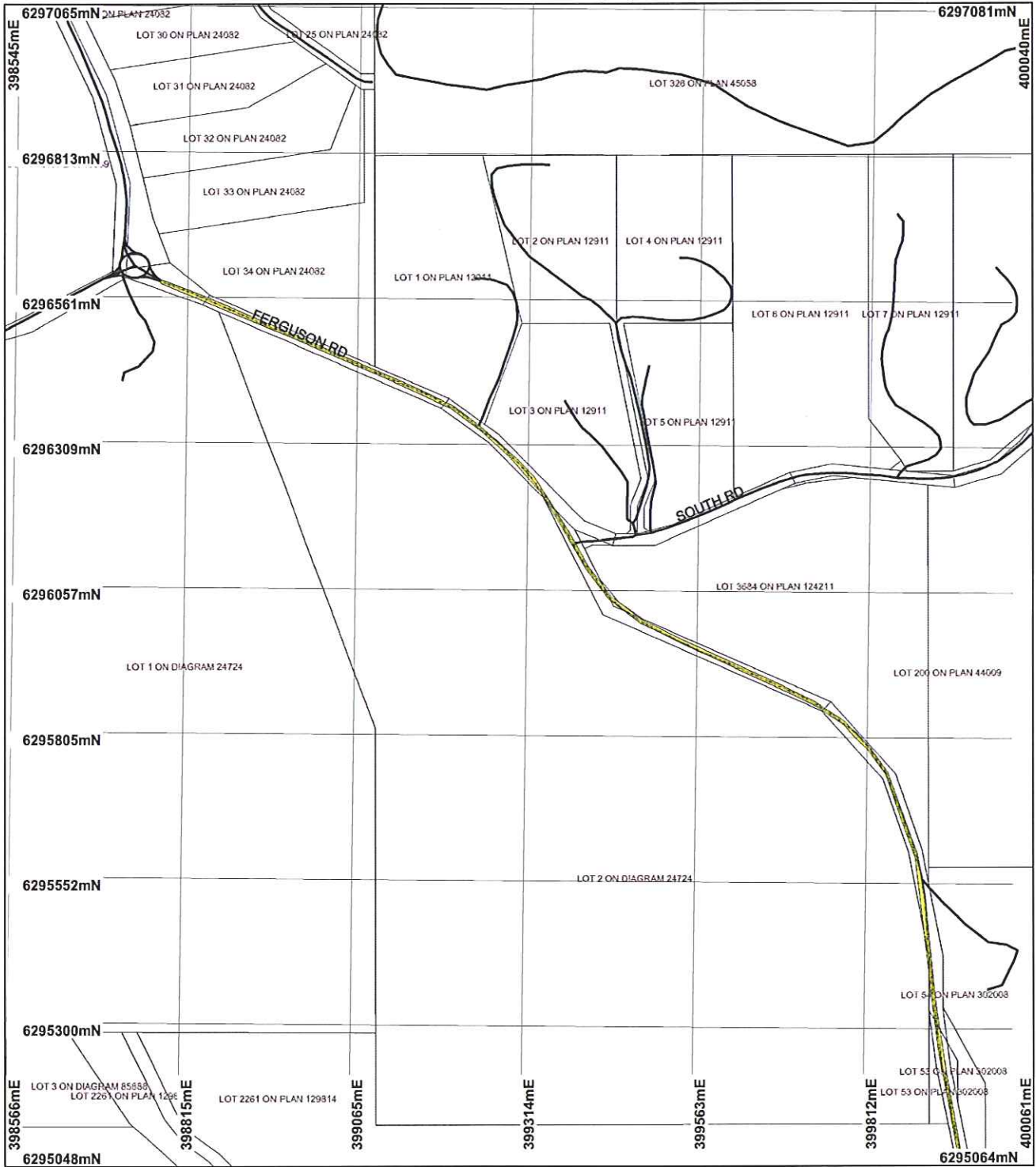


# Plan 1548/1(a)



## LEGEND

⚡ Road Centrelines - DLI 1/5/04

### Clearing Instruments

- Areas Subject to Conditions
- Areas Approved to Clear
- Cadastre - DLI

Busselton 50cm Orthomosaic - DLI 03  
Cadastre for labelling - DLI

- Freehold
- Crown Reserve
- State Forest / Timber Reserve
- Marine Park (cont)

- Crown Lease
- Lease / Reserve
- Lease on State Forest / Timber Reserve
- Public Roads
- Unallocated Crown Land
- Water



0  250 m

Scale 1:9273

(Approximate when reproduced at Letter)

Geocentric Datum Australia 1994

Note: the data in this map have not been projected. This may result in geometric distortion or measurement inaccuracies.

*Kim Taylor*  
Date 23/3/07

Kim Taylor  
Officer with delegated authority under Section 20 of the Environmental Protection Act 1986

Information derived from this map should be confirmed with the data custodian acknowledged by the agency acronym in the legend.

